

## Achievements:

- World Women's Professional Champion 2001 / 2 / 3 / 4 / 5 / 6 / 7
- BICC No. 1 Women's Player 1999, 2000 / 1 / 2 / 3 / 4 / 5 / 6 / 8 / 9
- BDO Women's Personality of the Year 1998 / 99, 2000 / 1 / 2
- British Open Singles Champion 1997 / 98, 2000 / 1 / 4 / 8 / 9
- England Open Singles Champion 1997 / 98, 2001 / 3 / 8
- English National Singles Champion 1999, 2000 / 4 / 9
- Winmau World Masters Champion 2000 / 2 / 3 / 4 / 5
- Denmark Open Singles Champion 1999, 2000 / 4 / 5
- Welsh Open Champion 1997, 2002 / 3 / 4 / 5 / 6 / 7
- British Pentathlon Champion 2004 / 5 / 6 / 7 / 9
- German Open Singles Champion 1997, 2003 / 9
- Embassy Gold Cup Singles Champion 2000 / 3
- Belgium Open Singles Champion 1999 & 2001
- Jersey Open Singles Champion 1999, 2000 / 1
- Norway Open Singles Champion 1999 & 2000
- Finland Open Singles Champion 1999 & 2001
- World Cup XII Singles Champion 1999 & 2003
- Dutch Open Singles Champion 1999, 2007 / 9
- WDF European Cup Singles Champion 2000
- British Classic Champion 2000 / 1 / 3 / 5
- Northern Ireland Open Champion 2005
- Golden Harvest Cup Champion 2002
- World Darts Trophy Champion 2003
- British Matchplay Champion 1997
- BDO Grand Slam Winner 1997 / 98
- Swedish Open Champion 2000 / 2
- Irish Masters Champion 2000 / 1
- Autumn Classic Champion 2002
- Pacific Masters Champion 1997
- Kampen Open Champion 2002
- Kent Open Champion 2007 / 8
- BDO International Open 2009
- IDPA Masters Champion 2002
- Welsh Classic Champion 2005
- Swiss Open Champion 2006
- England Masters 2009

England Captain

Titles shown up to  
September 2009

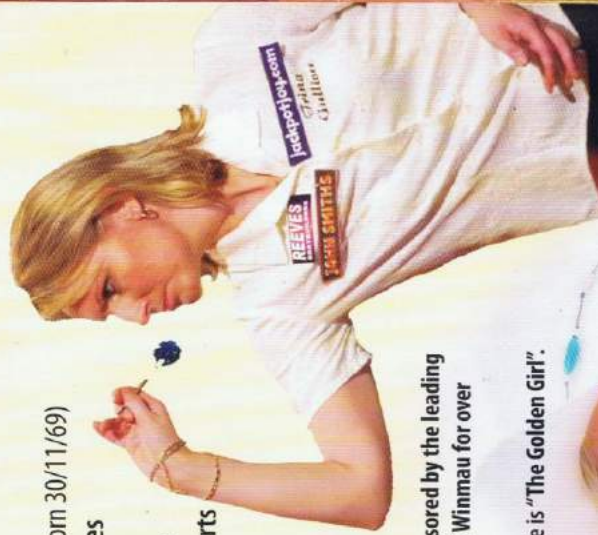
Trina Gulliver (born 30/11/69)

is the seven times  
Women's World  
Darts Champion  
of the British Darts  
Organisation.

In 2003 she was  
named BBC  
Midlands Sports  
Personality.

She has been sponsored by the leading  
global darts brand Winmau for over  
ten years.

Her sports nickname is "The Golden Girl".



# walk the Trina Trail

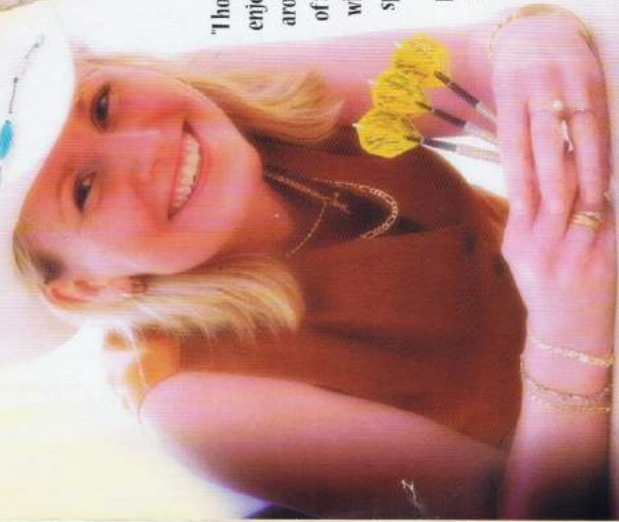
I hope that everyone  
enjoys the Trina Trail  
around this lovely town  
of Southam. The town  
where I grew up and  
spent most of my life.

I feel overwhelmingly  
honoured that  
Southam have  
chosen to celebrate  
my achievements in  
Darts in this way.

The town and its people have supported me immensely through my career,  
with the support coming from local companies within the area such as Reeves  
Boatbuilders, Car Consultants and Rally Office Chairs to name but a few. They  
have all been incredibly loyal to me and I hope that I have made the town,  
Southam, and its residents proud.

I will continue to do my very best to represent  
my home town properly and professionally  
throughout my career".

*Trina Gulliver*



Southam's Golden Girl

## This walk is dedicated to Trina Gulliver and her achievements in World Darts. The walk starts at the Bowling Green Pub

### ● **Bench 1 – Bowling Green Pub**

- Trina's father was landlord and she developed her early darts skills here.
- In the nineteenth-century, Joseph Arch, founder of the Agricultural Workers Trades Union, held meetings near the Bowling Green.

### **Walking downhill on Coventry Street, you will see on your left:**

- Aldine House – one of the first buildings in the country to have cement render.
- The Olde Mint – built in the fifteenth century. Local trading tokens were once minted here and a few still survive.

### **Turning left down Wood Street, on your left-hand side beyond the car park is:**

- Convent – built originally in 1640 from ship's timbers. In 1876, nuns moved into the building now known as the Olde Retreat House. An orphanage and school were also erected.

### **Cross the staggered junction into School Street, and see:**

The Old Schools – on either side of the road, you can see the fine brickwork of the old schools. The National School on the left cost a penny a day to attend. The other school on the right was the Board School, now Southam Sports & Social Club.

### **Continue down School Street to Brewsters Corner on the opposite side of Pendicke Street.**

### ● **Bench 2 – Brewsters Corner**

- Trina worked and learnt her trade as a carpenter here whilst attending Mid Warwickshire College and was the only female on her course.

### **Turn right along Pendicke Street towards Banbury Road, you will notice six small cottages opposite the supermarket car park (now three dwellings: numbers 22, 25 and 26):**

- Saucy Six Cottages – built to house postillions from the Craven Arms Hotel, these were the original bachelor pads – hence their name.

### **Near the junction with Oxford Street and Banbury Road there is a small alleyway on your left-hand side. Turn up here and at the end of the alley, turn right into the unmade road which is Tattle Bank. Walk down Tattle Bank and cross Browns Bridge until you reach bench 3.**

### ● **Bench 3 – Browns Bridge**

- This crossing of the river Stowe was originally the main route into Southam before the road bridge was built in 1929.
- Cross the Banbury Road and turn right back towards the town. On your left-hand side there is a public footpath. Follow this along the edge of the field over the stream until you reach Abbey Lane. Turn right and continue to the junction.**

### ● **Bench 4 – Abbey Lane Junction**

- The Abbey is on your left and sixteenth-century cottages are on your right.
- Proceed left for a short distance along Warwick Road and on the right-hand side of the road you can see:**
- The Stoneythorpe Hotel and just beyond it the Lilley Smith memorial urn within the railed enclosure. This is where Henry Lilley Smith established the first Provident Dispensary in 1823 and built a hospital for the treatment of eye and ear diseases.

### **Turn round and walk back towards the town centre. On your left you will notice a small wooden framed building with the number 4 on the door:**

- Previously the Old Labour Exchange, now housing the Cardall Collection of local memorabilia.

### **From here make your way up the hill to Market Hill. Climb the steps to the pavement in front of the shops. From here you will have a good view of several important buildings:**

- Immediately opposite the steps is a large white building, formerly, the Craven Arms Hotel, the main inn on the old coaching route through Southam which had stabling for up to eighty horses.
- Next to this building, there is a narrow alleyway called Chickabiddy Lane where poultry markets used to be held.

### **Continue up Market Hill pavement until you reach Park Lane. Opposite Park Lane you will see:**

- The beautifully restored pharmacy. This was the Manor House where Charles I stayed for two nights in 1642 during the Civil War.

### **Turn left into Park Lane:**

- On the left is St James Church in whose graveyard lie the remains of Seth Bond, who survived the Charge of the Light Brigade.

### ● **Bench 5 – Park Lane**

### **Continue down to the end of Park Lane:**

- Down Wattons Lane is where the Holy Well walk begins. The Holy Well spring dates from over a thousand years ago and has recently been restored.

### **Turn right and follow St James Road. On the right is:**

- The Graham Adams Centre. This used to be the local infants school attended by Trina Gulliver.

**Turn left at the second entrance to St James Crescent which becomes Mill Crescent, then turn first right onto Mill Road. The next bench is at the end of the road.**

### ● **Bench 6 – Southam College**

- Trina attended Southam College between 1982 and 1987.
- Opposite this bench you will see an old building. This occupies the site of the Old Mill. The windmill was constructed in 1834 and was four storeys high. A single family of millers and bakers worked the mill until 1947 when another family took over. The mill was dismantled in the 1970s.

### **Cross the road and turn right to make your way along Welsh Road West towards the town centre. This road is known as the Old Drovers' Road, relating to the town's history of Welsh Drovers and their dogs who for centuries drove livestock through Southam to markets in East England and London.**

- On your right, you can see Southam Primary School which is on the site of the old Work House.

### **Continue to the end of the road and turn left into Coventry Street. Cross the road and make your way along the tarmac path between numbers 10 and 11. Follow this path, crossing the junction of Tollgate Road and The Furrows at the bollards. Turn left at the gate near the bypass and enter Merestone Park.**

### ● **Bench 7 – Merestone Park**

### **Walk up the hill to the large stone at the top.**

- A Merestone marks the boundary of three settlements, in this case Southam, Long Itchington and Stockton.

### **From Merestone Park, follow the right-hand path out of the top of the park onto Merestone Close. Turn left onto Coventry Street and make your way back towards town. Cross the road and on your right you can visit:**

- The Grange and the Grange Hall. The Grange was used as an Officers hospital during World War I. Behind the Grange is the Grange Hall which contains tapestries depicting Southam's long history, created by local women in 2003 (ring 01926 813933 to view)
- Peace Garden in the grounds

### **Return to Coventry Street and walk downhill past the Bowling Green pub into the town centre to complete the walk.**

**For further information about Trina go to her website: [www.trina-gulliver.com](http://www.trina-gulliver.com)**

**For more local information please call into the Library on High Street.**

